

BIN GATES



BIN GATES

DUPLEX MODELS

Sweet® bin gates are all welded heavy gauge plate steel with angle reinforcements. Gate doors are balanced for easy opening and closing, and are replaceable. Each bin gate receives two coats of hammertone industrial enamel paint. All models can be readily adapted to power operation. Pneumatic or hydraulic cylinders provide simple operation and remote control for out of the way locations. Stainless steel and abrasion resistant steel construction are offered as an option. Call for details.

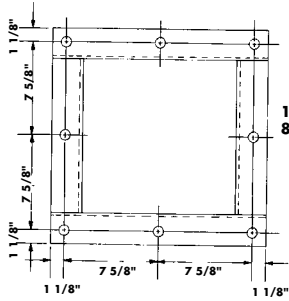
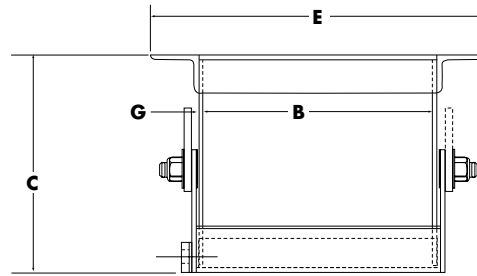
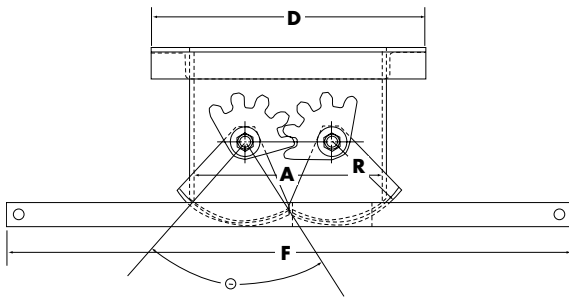
INSTALLATIONS



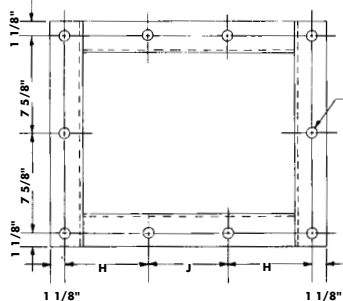
Easily attached to hoppers, bins, and chutes.

Both gates open and close together at the center with a single movement of the control handle.

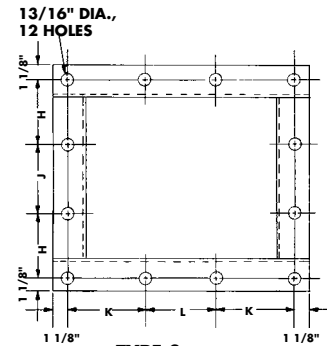




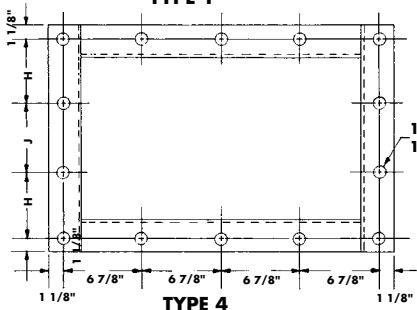
TYPE 1



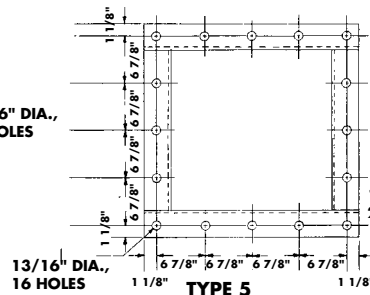
TYPE 2



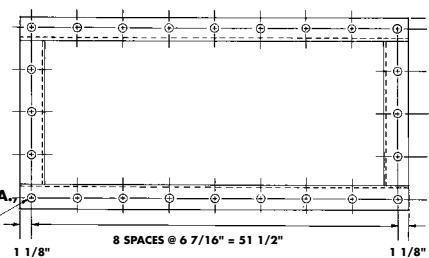
TYPE 3



TYPE 4



TYPE 5



TYPE 6

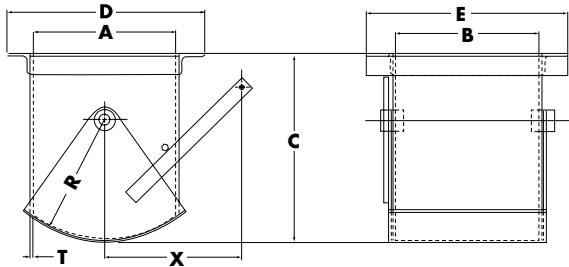
SWEET® STANDARD DUPLEX BIN GATES

VALVE SIZE										DIMENSIONS IN INCHES		
A	B	C	D	E	F	G	H	J	BOLT PATTERN TYPE	R	K	L
12	12	11 ¹ / ₂	17 ¹ / ₂	17 ¹ / ₂	36	1/4			1	5 ¹ / ₂		
12	16	11 ¹ / ₂	17 ¹ / ₂	21 ¹ / ₂	36	1/4	6 ¹ / ₂	6 ¹ / ₄	2	5 ¹ / ₂		
12	18	11 ¹ / ₂	17 ¹ / ₂	23 ¹ / ₂	36	1/4	7 ¹ / ₈	7	2	5 ¹ / ₂		
14	14	13 ¹ / ₈	19 ³ / ₄	19 ³ / ₄	38	3/8	6	5 ¹ / ₂	3	6 ¹ / ₂	6	5 ¹ / ₂
14	18	13 ¹ / ₈	19 ³ / ₄	23 ³ / ₄	38	3/8	7 ¹ / ₄	7	3	6 ¹ / ₂	6	5 ¹ / ₂
15	15	14 ¹ / ₄	20 ³ / ₄	20 ³ / ₄	39	3/8	6	6 ¹ / ₂	3	6 ¹ / ₂	6	6 ¹ / ₂
15	20	14 ¹ / ₄	20 ³ / ₄	25 ³ / ₄	39	3/8	8	7 ¹ / ₂	3	6 ¹ / ₂	6	6 ¹ / ₂
15	24	14 ¹ / ₄	20 ³ / ₄	29 ³ / ₄	39	3/8	6	6 ¹ / ₂	4	6 ¹ / ₂		
16	16	14 ¹ / ₂	21 ³ / ₄	21 ³ / ₄	40	3/8	6 ¹ / ₂	6 ¹ / ₂	3	7 ³ / ₄	6 ¹ / ₂	6 ¹ / ₂
16	20	14 ¹ / ₂	21 ³ / ₄	25 ³ / ₄	40	3/8	8	7 ¹ / ₂	3	7 ³ / ₄	6 ¹ / ₂	6 ¹ / ₂
18	18	15	23 ³ / ₄	23 ³ / ₄	42	3/8	7 ¹ / ₄	7	3	8 ¹ / ₂	7 ¹ / ₄	7
18	24	15	23 ³ / ₄	29 ³ / ₄	42	3/8	7 ¹ / ₄	7	4	8 ¹ / ₂		
20	20	17	25 ³ / ₄	25 ³ / ₄	44	3/8	8	7 ¹ / ₂	3	9	8	7 ¹ / ₂
24	24	18 ¹ / ₄	29 ³ / ₄	29 ³ / ₄	48	3/8			5	10 ¹ / ₄		
24	48	18 ¹ / ₄	29 ³ / ₄	53 ³ / ₄	48	1/2			6	10 ¹ / ₄		

"B" length can be changed upon request. Contact sales for price and availability.

BIN GATES

SIMPLEX MODELS

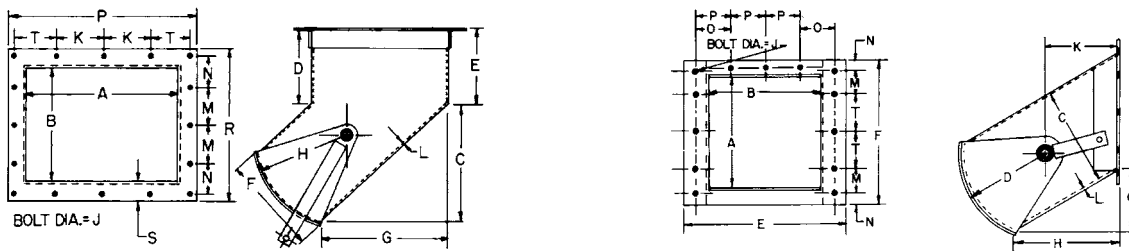


Standard Specifications

Valve Size							Dimensions in Inches	
A	B	C	D	E	R	T	X	
6	6	8 ¹ / ₂	8 ³ / ₄	8 ³ / ₄	5 ¹ / ₄	10 GA.	6 ⁵ / ₈	
7	7	9	9 ³ / ₄	9 ³ / ₄	5 ¹ / ₂	10 GA.	6 ³ / ₄	
8	8	11	10 ³ / ₄	10 ³ / ₄	6 ¹ / ₂	10 GA.	8	
12	12	16	17 ³ / ₈	17 ³ / ₈	10 ⁵ / ₁₆	3/16	13 ¹ / ₄	
12	16	16	17 ³ / ₈	21 ³ / ₈	10 ⁵ / ₁₆	3/16	13 ¹ / ₄	
12	20	16	17 ³ / ₈	25 ³ / ₈	10 ⁵ / ₁₆	3/16	13 ¹ / ₄	
14	14	18 ¹ / ₂	19 ¹ / ₂	19 ¹ / ₂	12	1/4	13 ¹ / ₄	
16	16	21	21 ¹ / ₂	21 ¹ / ₂	15	1/4	13 ¹ / ₄	
18	18	24 ¹ / ₄	23 ¹ / ₂	23 ¹ / ₂	14 ³ / ₄	1/4	13 ¹ / ₄	
18	24	24 ¹ / ₄	23 ¹ / ₂	29 ¹ / ₂	14 ³ / ₄	1/4	13 ¹ / ₄	
20	20	26 ¹ / ₈	25 ³ / ₄	25 ³ / ₄	17 ⁷ / ₈	3/8	13 ¹ / ₄	

UNDERCUT WALL & CEILING MOUNTED

Sweet® wall and ceiling undercut bin gates are designed to mount on vertical sides or bottom of bins, chutes, and hoppers. Undercut gates are similar in design to Sweet® simplex gates except discharge material is directed diagonally away or off to one side. Flange connections are pre-drilled for easy field installation.



SWEET® CEILING MOUNTED UNDERCUT BIN GATES

Valve Size													Dimensions in Inches			
A	B	C	D	E	F	G	H	J	K	L	M	N	P	R	S	T
12	12	12 ¹ / ₄	4 ³ / ₄	9 ⁷ / ₈	13	12 ¹ / ₄	10 ¹ / ₈	5/8	4	3/16	4	3 ⁷ / ₁₆	17 ³ / ₈	17 ³ / ₈	2 ¹¹ / ₁₆	3 ⁷ / ₁₆
14	10	14 ¹ / ₄	5	10 ⁷ / ₈	15 ¹ / ₄	14 ¹ / ₂	12	5/8	3 ¹ / ₂	1/4	5	3 ¹ / ₂	19 ¹ / ₂	15 ¹ / ₂	2 ³ / ₄	3
16	14	17	6	12 ⁷ / ₈	17 ¹ / ₄	17	12	5/8	5 ¹ / ₂	1/4	3 ¹ / ₂	3	21 ¹ / ₂	19 ¹ / ₂	2 ³ / ₄	4
18	18	21	8 ⁹ / ₁₆	16 ¹ / ₄	19 ¹ / ₂	21	15	3/4	6	1/4	6	4 ¹ / ₂	23 ¹ / ₂	23 ¹ / ₂	2 ³ / ₄	4 ¹ / ₂
24	20	25	10	20	25 ¹ / ₄	25	18	3/4	8	3/8	6 ¹ / ₂	5	29 ¹ / ₂	25 ¹ / ₂	2 ³ / ₄	4 ¹ / ₂
24	24	25	10	20	25 ¹ / ₄	25	18	3/4	8	3/8	8	4 ¹ / ₂	29 ¹ / ₂	29 ¹ / ₂	2 ³ / ₄	4 ¹ / ₂

SWEET® WALL MOUNTED UNDERCUT BIN GATES

Valve Size													Dimensions in Inches			
A	B	C	D	E	F	G	H	J	K	L	M	N	P	R	T	
12	12	10 ³ / ₈	9 ¹ / ₄	17 ³ / ₈	15 ³ / ₈	6 ⁷ / ₈	11 ¹ / ₄	5/8	10	3/16	3 ³ / ₁₆	1/2	4	5 ³ / ₈	6	
18	18	15 ³ / ₈	14 ³ / ₈	23 ¹ / ₂	22 ¹ / ₂	11 ³ / ₁₆	19	3/4	13	1/4	4 ¹ / ₄	1	6 ³ / ₄	6	6	
18	24	15 ⁷ / ₁₆	13	29 ¹ / ₂	21 ¹ / ₂	11	19	3/4	13	1/4	3 ¹ / ₂	1 ¹ / ₄	6 ³ / ₄	6	6	
24	24	20 ³ / ₄	16	29 ¹ / ₂	27 ¹ / ₂	12 ¹ / ₂	22	3/4	16 ¹ / ₄	3/8	4 ¹ / ₂	1 ¹ / ₄	6 ³ / ₄	8	8	
24	30	20 ³ / ₄	16	35 ¹ / ₂	27 ¹ / ₂	12 ¹ / ₁₆	22	3/4	16 ¹ / ₄	3/8	7 ¹ / ₂	1 ¹ / ₄	8 ¹ / ₄	9	9	



Telephone 937-325-1511
Fax 937-322-1963
Toll Free 1-800-334-7254



Website: www.sweetmfg.com
E-mail: sales@sweetmfg.com

Springfield, OH 45501