

Flite-Veyor[®]

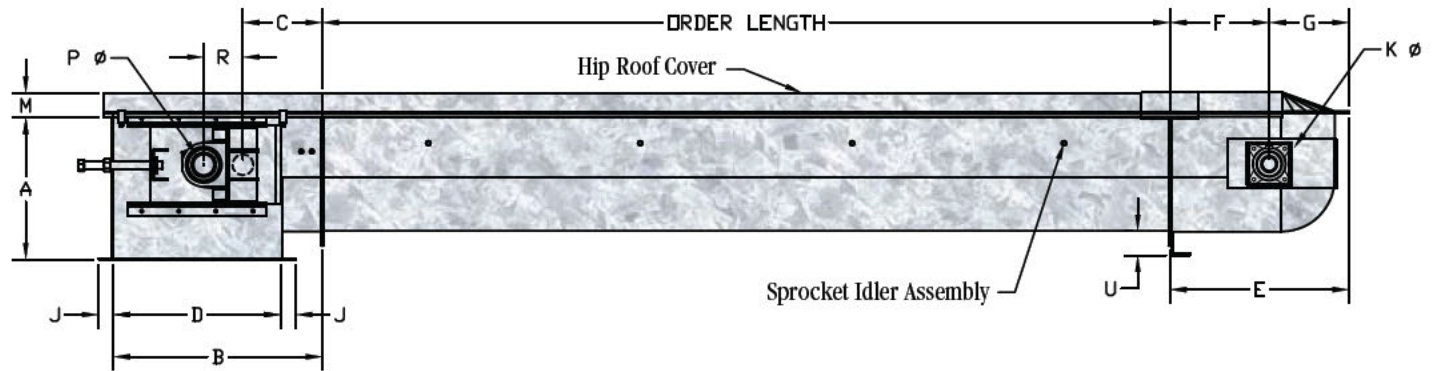
Model "RB" — Round Bottom Drag Conveyors



 **SWEET**[®]

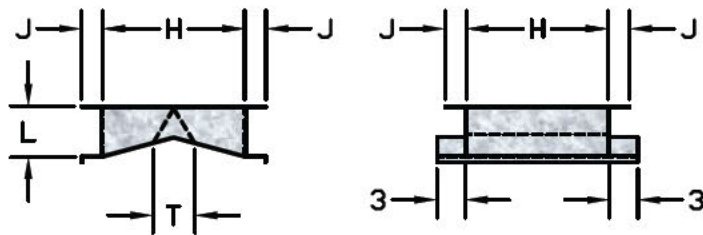
Flite-Veyor® Model "RB" — Round Bottom Drag

Standard Conveyor Dimensions

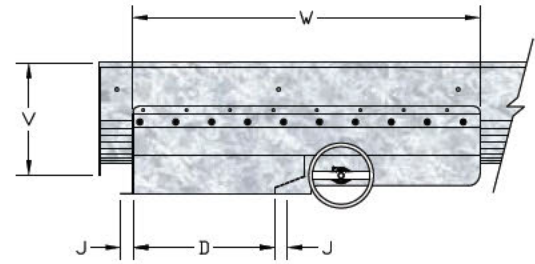


Size	A	B	C	D	E	F	G	H	J	K
9"	13 1/2"	24 1/4"	10 1/2"	18"	19 7/8"	12"	6 1/8"	10"	1 5/8"	1 7/16"
12"	17 7/8"	28 3/4"	14 3/4"	20"	21 3/4"	12"	9 3/4"	13"	2 1/4"	1 7/16"
14"	20 1/4"	29 3/4"	15"	24"	25 5/8"	14 3/8"	11"	15"	2 1/4"	1 15/16"
16"	22"	32 3/4"	16"	26"	27 5/8"	15 1/2"	12 1/2"	17"	2 1/4"	2 3/16"

NOTE: Dimensions are subject to change without notice.

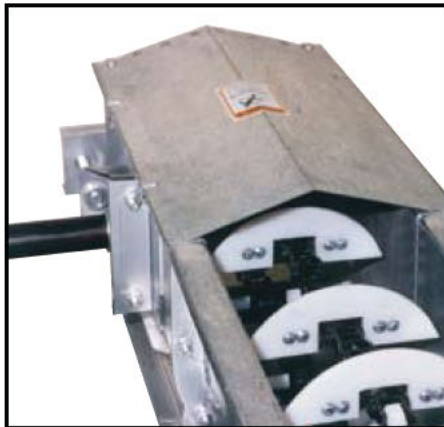


Standard Inlet



Intermediate Discharge Gate Curved Slide

UHMW chain return sprocket idlers for smooth operation.



Discharge Head Section with Drive Shaft

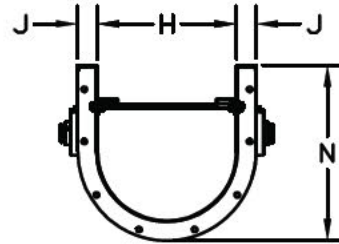
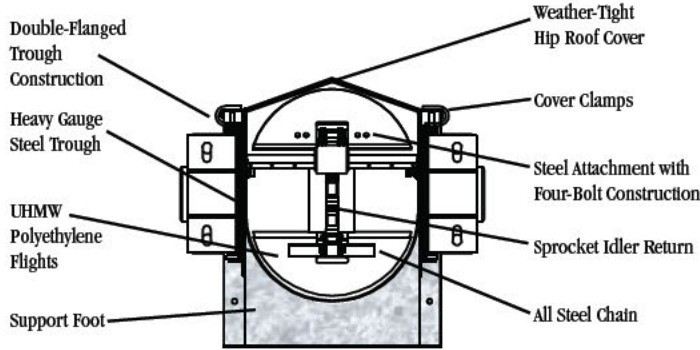
Model "RB" Flite-Veyor® features round bottom "U" trough design for those applications requiring thorough cleaning of the conveyed product from the housing. This is particularly important when conveying material of different types to prevent cross contamination from one run to the next.

The all galvanized steel construction resists rust, corrosion and costly maintenance. Covers are hip roof design to help prevent water or moisture accumulation.

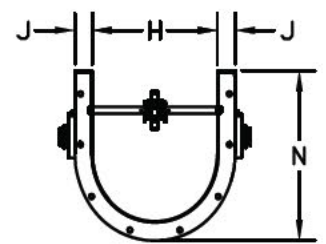
A wide range of capacities is possible by selection of trough size and chain speed. Heavy-duty chain and UHMW polyethylene replaceable flights create positive "enmasse" material flow, reducing friction with no metal-to-metal contact. UHMW chain return sprockets permit smooth operation.

solutions that create an extraordinary customer experience.

Conveyors

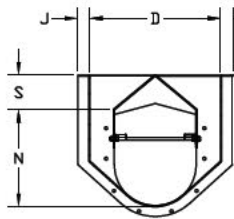


Trough Cross Section with Angle Returns

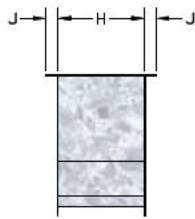


Trough Cross Section with Sprocket Returns

L	M	N	P	R	S	T	U	V	W	Size
4 3/4"	2 1/2"	11 1/8"	1 15/16"	5"	5"	3"	2 7/8"	16 1/4"	44"	9"
5 3/4"	2 1/2"	14 1/4"	2 3/16"	6"	7"	3"	3 1/8"	19 5/8"	49 1/4"	12"
5 3/4"	3"	16 3/4"	2 7/16"	6"	7"	3"	3 3/8"	22 3/8"	58"	14"
5 3/4"	3"	19"	2 15/16"	6"	8"	3"	3 1/2"	26"	48 3/4"	16"



By-Pass Inlet with Angle Returns



By-Pass Inlet with Sprocket Returns



By-Pass Inlet (Optional)

NOTE:
Cover must be on during operation. Cover removed only to show detail.

Standard conveyors consist of: head discharge section with spherical roller bearings and adjustable take-ups; contoured end tail section; one standard inlet; intermediate sections with hip roof covers and UHMW sprocket idler returns (standard on 9" and 12"); chain with UHMW flights. Options include by-pass inlets, curved slide intermediate discharges with R&P, air or electric controls and steel angle return rails (option on 12", standard on 14" and 16"). Round bottom trough adapts to the standard Silver Span® conveyor support system. Drive packages are Class II rated and are furnished complete with drive cover.

Model "RB" Flite-Veyors® may be operated on limited inclines where required. Capacities and horsepower are dependent on the degree of incline. Check with factory sales personnel to obtain our recommendations for your project specifications.



Tail Section
Rounded, Self-Cleaning

"The Quality Line"
Always the Best Value

Model "RB" — Round Bottom Drag Conveyors

Galvanized Round Bottom Drag Conveyors. Select from four models.



"RB" Flite-Veyor® Capacities

SIZE	BPH	CFH	BPH	CFH	BPH	CFH
	FPM	MTPH	FPM	MTPH	FPM	MTPH
9"	1000	1250	2000	2500	3000	3750
	66.3	25.4	132.5	50.8	198.8	76.2
12"	3000	3750	4000	5000	5000	6250
	110.4	76.2	147.2	101.6	184	127
14"	4000	5000	5000	6250	6000	7500
	87.1	101.6	108.8	127	130.6	152.4
16"	6000	7500	7000	8750	8000	10000
	105	152.4	122.4	177.8	139.9	203.2



Telephone 937-325-1511
 Fax 937-322-1963
 Toll Free 1-800-334-7254



Website: www.sweetmfg.com
 E-mail: sales@sweetmfg.com

